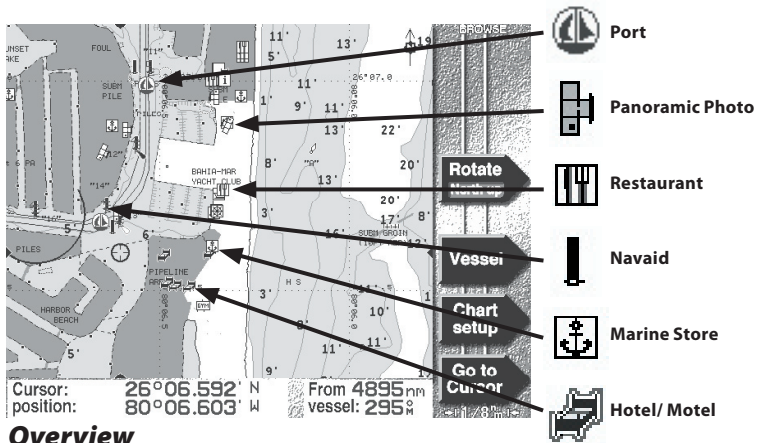


# Port Services Addendum



## Overview

The Navionics Platinum charts include the locations of service providers such as marinas, restaurants, fuel, repair, etc., and may additionally include details of the service (e.g. Fuel: diesel, gas), hours of operation, phone number, etc. Port Services information also includes Panoramic photos and the Coast Pilots Books.

## Compatibility

The 6100i and 6000i can use all Navionics chart cards, but the information each chart plotter is capable of displaying differs.

Features	Platinum (6100i Only)	Gold + (Both)	Gold (6000i Only)
Port Icons on Chart	✓	✗	✗
Port Service Icons on Chart	✓	✗	✗
Basic Info (Info Bar)	✓	✗	✗
Detailed Info	✓	✗	✗
Wrecks Database (enhanced)	✓	✓	✗
Panoramic Photos (Points of Interest)	✓	✗	✗
Coast Pilot (Books)	✓	✗	✗

## Getting Port Services Information

### 1. Cursor-Select

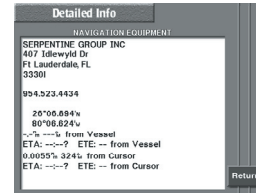
The fastest way to bring port services data to your screen.

- Using the cursor control, move the cursor over the port services icon you wish to interrogate.

*The Info Bar will display Basic Info.*

### Ports & Photos

If the icon denotes a Port or Panoramic Photo, pressing **More Info** will display the *Detailed Info* screen, or the photo.



### Services

If the icon denotes a service, selecting **More Info** will display one of the following:

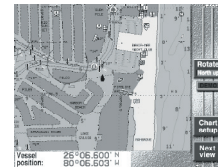
- the type of service selected;
- the entire name of the service, if it was abbreviated in Basic Info;
- the *Detailed Info* screen.

### 2. WAYPTS/ ROUTES Key

The most flexible way to access the entire Port Services database. Once you have installed a Platinum chart region in the 6100i, a new **Ports** menu key is available.

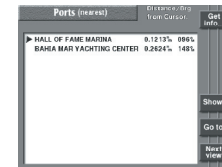
- Press the **WAYPTS/ROUTES** key, below the numeric keypad.
- Press **Ports**.

The next screen view displayed depends on the screen you viewed last. **Next View** cycles through these screens.



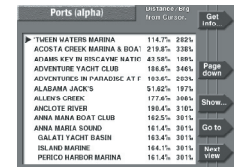
### Waypts/ Chart

Identical in function to the main chart screen, with the addition of the **Next View** menu key.



### Closest Ports

Displaying all ports on the current chart section, sorted by distance from your vessel or the cursor. Use the cursor key to select the port you wish to **Get Info** about.



### Alphabetic Ports [Ports (alpha)]

All ports in your chosen chart region.

# Additional Information

## Info Categories

Each port contains a database of what services are available at that port.

From either the **Ports (alpha)** or **Closest Ports** screen:

- Use the cursor keys to select a port
- Press **Get Info**

The **Info Type** screen gives you access to the port's Panoramic **Photos**, Coast **Pilot** books and Port Services **Info**.

- Press **Info**

The **Info Categories** screen presents the services the selected port has to offer.



**Dockage/ Fuel:** A list of dockage and fuel (gas/diesel) services

**Repair:** A list of repair services

**Services:** Hookup, utilities (rest rooms), ramps, etc

**Supplies:** General supplies, stores, shops

**Other:** First Aid, restaurants, taxi, airport, campsites, sports, transport, hotels, post office, etc

From this screen, information becomes more specific depending on the menu button pressed.

## Coast Pilot Books

Coast Pilot books contain important information about navigating around popular ports. These guides are indispensable aids for bringing local knowledge to your helm.

To find a Coast Pilot book for a selected port:

- Press **Get Info**
- Press **Pilots**

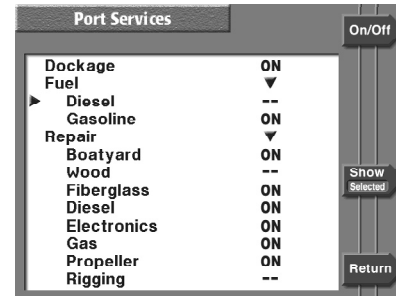
If a Coast Pilot book is available, the **Pilots** menu will be available.

## Coast Pilot Menu Options

- Press **Page Up** or **Page Down** keys to scan the book.
- Press **Show Next Link** to step through the hyperlinks on the page.
- Press **Jump To Link** to take you to the hyperlink's related info.
- Press **Link Back** to go back to the referring screen.
- Press **Return** to get back to the **Information Type** screen.

## Show...

Finding the information you want is made easier by limiting, or filtering, the information displayed on screen. You can manage what data is shown on screen using the **Show...** feature.



From either the **Ports (alpha)** or **Closest Ports** screen:

- Press **Show...**

The **Port Services** screen gives you access to the parameters you can switch on or off.

Use the cursor control keys to select a parameter. Groups are indicated with a down arrow in the ON/OFF column.

- Press **On/Off** to toggle the selected setting. If any parameter is set to OFF, menu key 4 changes from **Show All** to **Show (selected)**.
- Press **Show All**, to reset parameters to the default ON state.

*This addendum serves as an introduction to the extended functionality offered by Navionics Platinum chart cards. For more detailed information on how these features work with your product, please consult your user manual.*